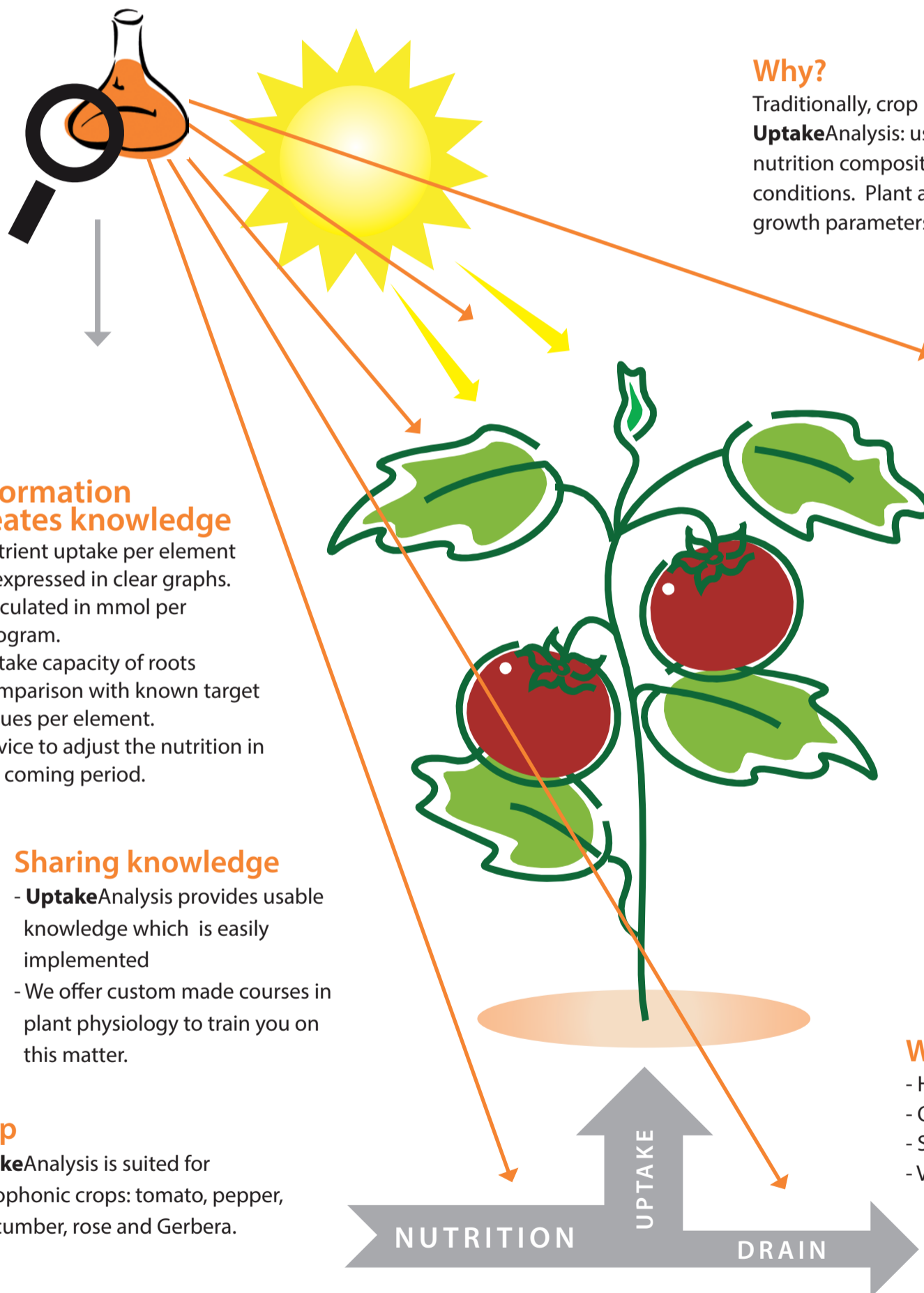


UPTAKE ANALYSIS



UptakeAnalysis operates on the basis of the actual uptake, plant development, plant vitality and climate conditions. These parameters are being calculated in an advanced (plant) model. This results in an unique predictive nutrition value and improves the crop quality. At the same time, savings on fertilizers are achieved.



Why?

Traditionally, crop nutrition takes place on target values. **UptakeAnalysis**: uses more information to establish a correct nutrition composition, taken into account all relevant growth conditions. Plant and climate conditions are the major growth parameters.

Information creates knowledge

- Nutrient uptake per element is expressed in clear graphs.
- Calculated in mmol per kilogram.
- Uptake capacity of roots
- Comparison with known target values per element.
- Advice to adjust the nutrition in the coming period.

Sharing knowledge

- **UptakeAnalysis** provides usable knowledge which is easily implemented
- We offer custom made courses in plant physiology to train you on this matter.

Crop

UptakeAnalysis is suited for hydroponic crops: tomato, pepper, cucumber, rose and Gerbera.

Climate conditions

Steer nutrition on input:

- Crop Nutrition: EC and amount of water
- Drain %
- Amount of sunlight per week
- CO2 concentrations
- Crop development in time
- Fruit/flower development in time
- Growth phase of the plant

Output:

This information will be calculated with an advanced model. The right nutrition composition is adjusted according to this model.

What's in for you?

- Higher quality of crop and end product.
- Optimization of nutrition balance
- Savings on fertilizers
- Vital roots and plants

Groen Agro control is an innovative laboratory that optimizes production and quality in Horticulture, Produce, Food processing and Biotechnology.

» Discover it on www.agrocontrol.eu

Groen Agro Control is part of the Delft Research Group

Groen Agro Control

LABORATORIUM ONDERZOEK & ADVIES

